

LELAND INNOVATION PARK

± 5 – 165 ACRE INDUSTRIAL LOTS FOR SALE

LELAND, BRUNSWICK COUNTY, NC



Presented By:
Cape Fear Commercial
102 Autumn Hall Drive | Suite 210
Wilmington, NC 28403
(p) 910.344.1000 (f) 910.344.1020



The information contained herein is from sources we deem accurate and reliable, however, it is submitted without representation or warranty and Cape Fear Commercial assumes no liability for errors and omissions of any kind.

PROPERTY SUMMARY



Address:	Leland Innovation Park Mercantile Drive NE Leland, Brunswick County, NC 28451
Description:	<ul style="list-style-type: none"> • The property offering consists of numerous industrial tracts ranging from \pm 5 – 165 acres available in Leland Innovation Park. • I-140 ("Wilmington Bypass") intersects US Highway 74/76 in the immediate vicinity of the property, creating convenient access to all parts of New Hanover and Brunswick counties.
Zoning:	ID - Innovation District - Town of Leland
Utilities:	Water and Sewer available through Brunswick County. Piedmont Natural Gas is also available along with fiber internet capabilities.

TRACT	ACREAGE	PRICING
1	\pm 31.84 Acres	\$1,495,000
2	\pm 76 Acres	\$4,995,000
3	\pm 27 Acres	\$1,695,000
4	\pm 25 Acres	\$1,795,000
5	\pm 5 Acres	\$595,000

Tracts can be combined & tract sizes can be altered



For more information, please contact:

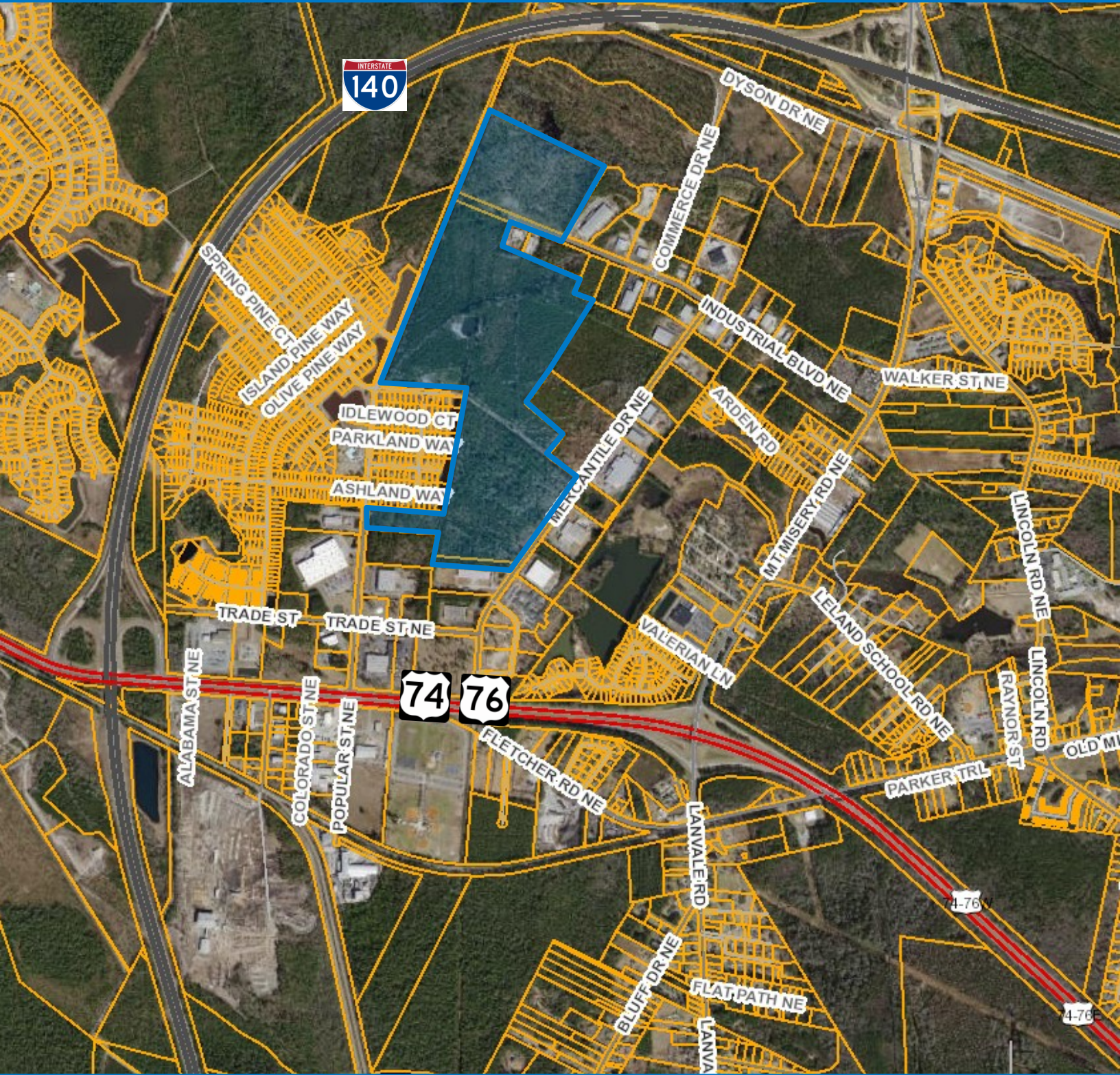
Will Leonard

910.344.1015 (main)

910.233.5351 (mobile)

wleonard@capefearcommercial.com





For more information, please contact:

Will Leonard

910.344.1015 (main)

910.233.5351 (mobile)

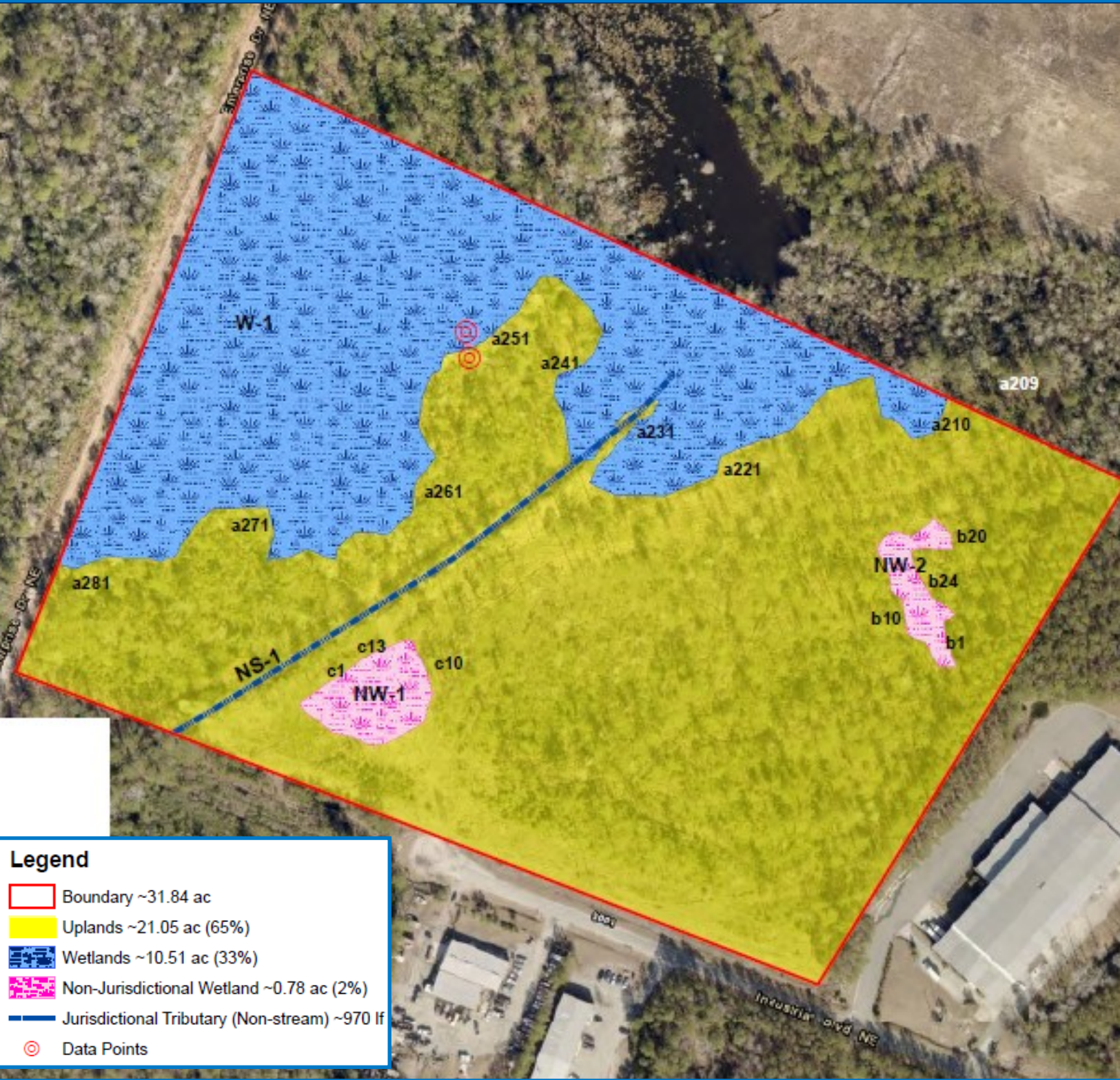
wleonard@capefearcommercial.com





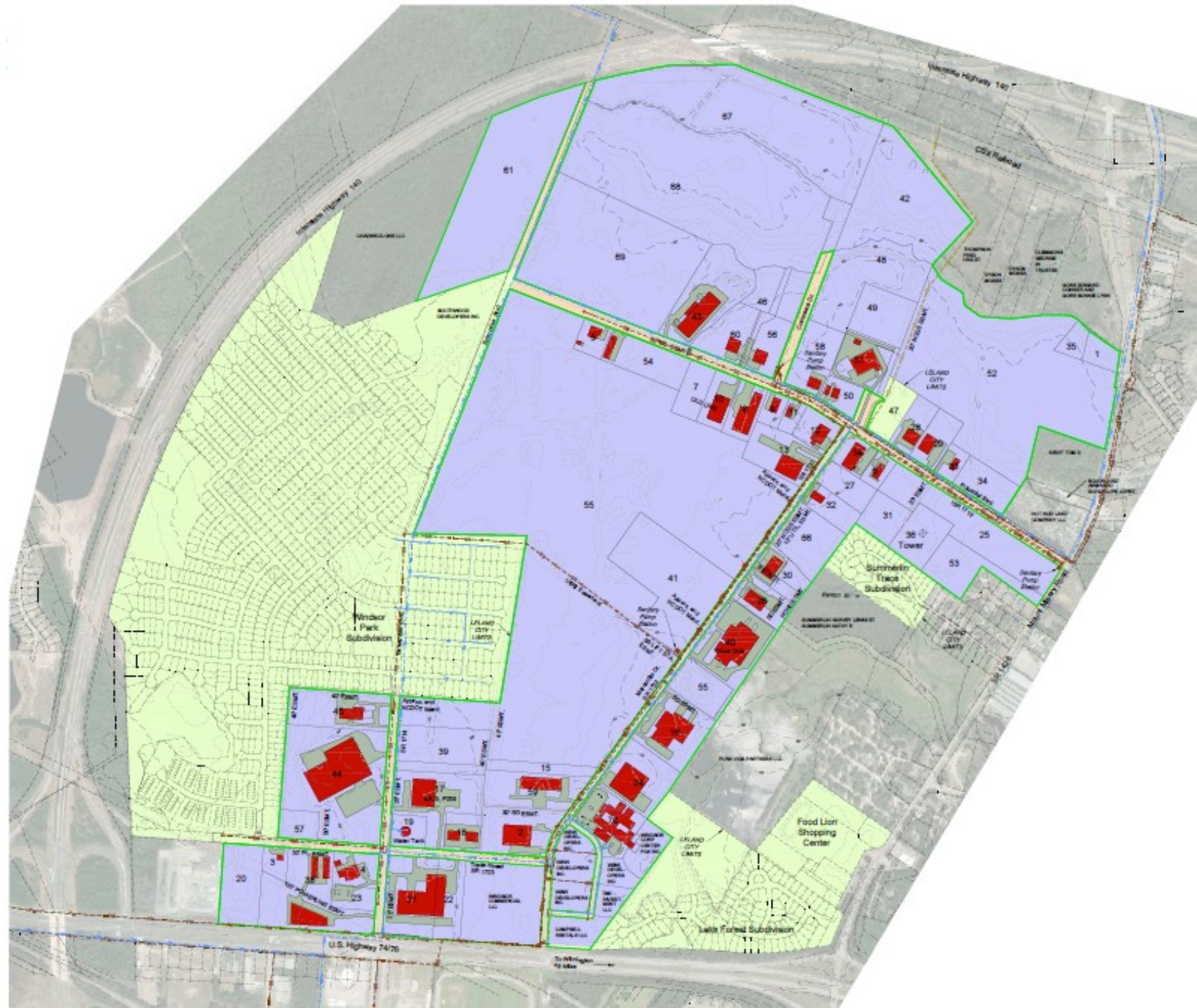
For more information, please contact:
 Will Leonard
 910.344.1015 (main)
 910.233.5351 (mobile)
 wleonard@capefearcommercial.com





For more information, please contact:
Will Leonard
910.344.1015 (main)
910.233.5351 (mobile)
wleonard@capefearcommercial.com





**LELAND INNOVATION PARK
OVERALL CONCEPTUAL LANDPLAN**

For more information, please contact:

Will Leonard

910.344.1015 (main)

910.233.5351 (mobile)

wleonard@capefearcommercial.com



LOCATION MAP



For more information, please contact:

Will Leonard

910.344.1015 (main)

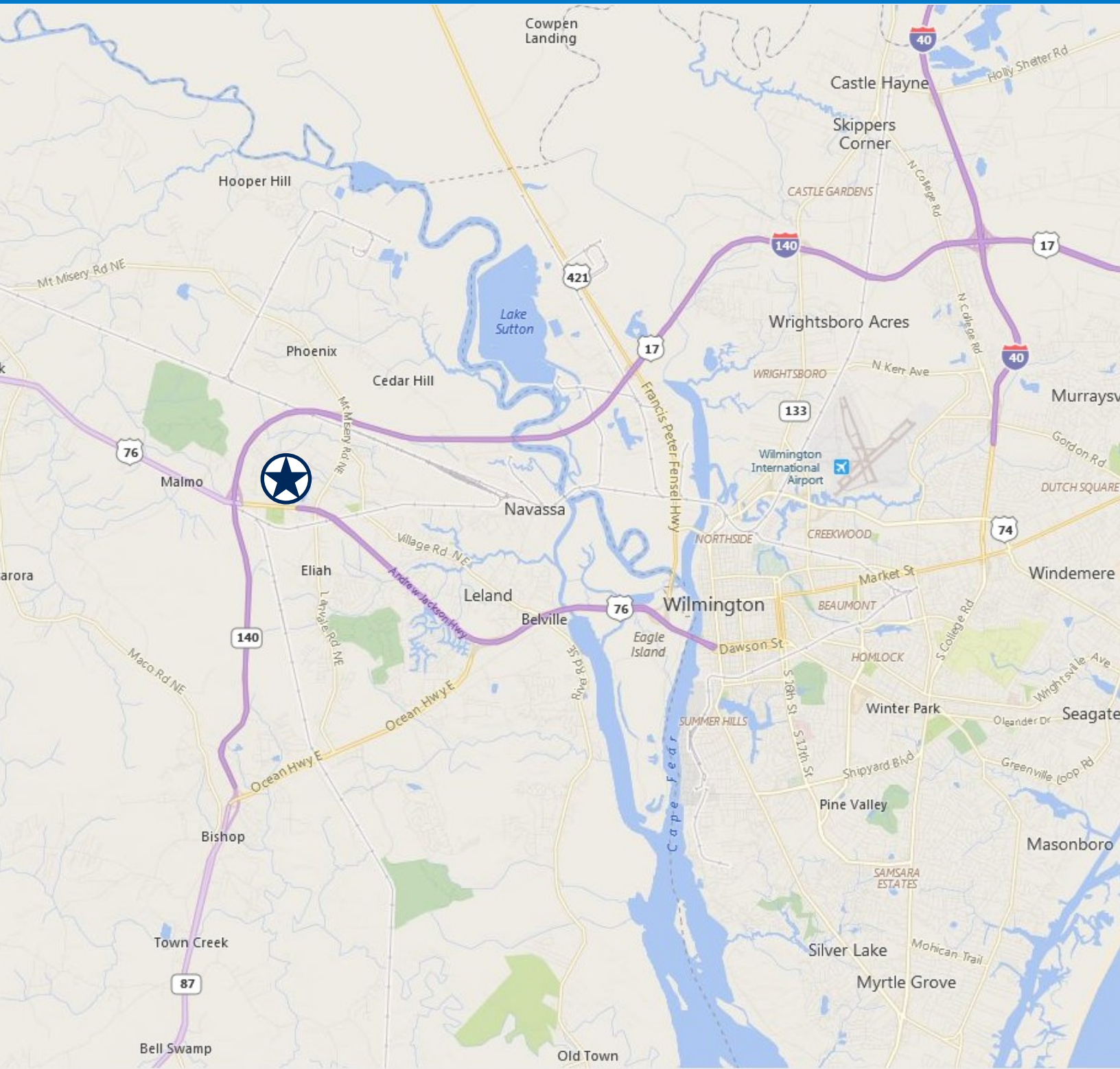
910.233.5351 (mobile)

wleonard@capefearcommercial.com



The information contained herein is from sources we deem accurate and reliable, however, it is submitted without representation or warranty and Cape Fear Commercial assumes no liability for errors and omissions of any kind.

LOCATION MAP



For more information, please contact:

Will Leonard

910.344.1015 (main)

910.233.5351 (mobile)

wleonard@capefearcommercial.com

