



Town of  
**Leland**

Growing our future. Nourishing our roots.

# Leland 2045 Quarterly Update

---

Town Council

August 15, 2022

Barnes Sutton

Community Development Planner

## Background

---

The Leland 2045 Comprehensive Plan (“Leland 2045”) is a planning document that outlines goals, policies, and implementation strategies that were developed through a robust public engagement process.

The purpose of the Leland 2045 Comprehensive Plan is to enable Leland officials and citizens to anticipate and constructively respond to growth and change, and to encourage the development of safe and healthy, built and natural environments that create opportunities for all.

The plan was adopted November 18, 2021.



## Planning Themes

Through collaboration with planning staff, the community, and the Leland 2045 Focus Group, the following six themes were created to represent a vision to collaboratively advance the economy, society, culture, and the environment:



**HIGHLY VALUED AND PROTECTED  
NATURAL AND CULTURAL  
RESOURCES**



**AN INCLUSIVE,  
SUPPORTED, HEALTHY,  
SAFE, AND EDUCATED  
COMMUNITY**



**LIVABLE, DIVERSE,  
AND CONNECTED  
NEIGHBORHOODS THAT  
ACCOMMODATE GROWTH**



**INFRASTRUCTURE  
THAT SUPPORTS  
COMMUNITY LIFE**



**A RESILIENT AND STABLE  
ECONOMY**



**AN ACTIVE  
PARTICIPANT IN  
A COOPERATIVE  
REGION**





## Highly Valued and Protected Natural and Cultural Resources

Vision: Leland's natural resources are fundamental to our lifestyle, economy, well-being, and resilience. Protecting and maintaining its health and ecological function are a primary objective within planning for growth.

### Ongoing Activities

- ❖ 335 lbs of trash and recycling cleaned during Community Stream Clean-Up
- ❖ Received \$20,000 in Resilient Coastal Communities Program funding for Engineering/Design for a drainage plan
- ❖ Received \$258,429 from the NC Department of Agriculture's Streamflow Rehabilitation Assistance Program to conduct vegetative debris removal activities in Leland streams
- ❖ Staff formed an internal Sustainability and Resiliency Committee





## Livable, Diverse, and Connected Neighborhoods that Accommodate Growth

Vision: Leland's neighborhoods and communities promote connectivity, sense of place, character, and quality of life. This is done by providing walkable and bikeable places for living, working, shopping, recreation, and interacting for diverse age groups, income levels, and abilities.

### Ongoing Activities

- ❖ Partnering with NC Forestry Service and NC Urban Forest Council to create a Tree Canopy Assessment





## A Resilient and Stable Economy

Vision: Leland has the programs, plans, strategies, and a workforce that is prepared to capitalize on regional opportunities that diversify and expand its tax base and stabilize its vulnerability to economic cycles.

### Ongoing Activities

- ❖ Annexed approximately 190-acres into the Town, roughly 59-acres of which were zoned Commercial
- ❖ The Interactive Gateway District Mapping Tool went live on the Town's website to guide redevelopment in the Gateway District





## An Inclusive, Supported, Healthy, Safe, and Educated Community

Vision: Public health, safety, and education are valued and provided for with access to housing choices, high quality schools, libraries, healthy foods, parks and recreation, health care, safe neighborhoods, art, and culture.

### Ongoing Activities

- ❖ Partnering with Cape Fear River Watch to conduct research about how much litter enters our stormwater system
- ❖ Launched the redesigned Town of Leland website to enhance user-friendliness and accessibility
- ❖ Fire Station 53 operational
- ❖ Fire Station 51 under construction







## Infrastructure that Supports Community Life

Vision: Leland plans and provides for efficient, cost-effective, and environmentally friendly infrastructure service, walking and biking, safe and complete streets, and opportunities for potential future transit connectivity.

### Ongoing Activities

- ❖ Received \$950,000 in funding from the Transportation Infrastructure Resiliency Fund for the Leland Resilient Routes Project
- ❖ Awarded a dual-port electric vehicle charging station for Founders Park through Volkswagen Public Access Program



## An Active Participant in a Cooperative Region

Vision: Leland's plans and the plans of adjacent jurisdictions complement each other's vision, goals, and opportunities for success. We collaborate with our neighbors to elevate both Leland and the region.

### Ongoing Activities

- ❖ Entered in a "Fire Automatic Aid Agreement" with Winnabow Volunteer Fire Department
- ❖ Partnered with Cape Fear River Watch to place 20 "Do Not Dump-Drains to Creek" storm drain markers on stormwater drains
- ❖ Attended luncheon about planning in the region
- ❖ Participating in regional Community Health Needs Assessment



## Stay Updated

---

- Recurring Leland 2045 Quarterly Updates
  - November, February, May, August
- Transition [www.Leland2045.com](http://www.Leland2045.com) to Dashboard for tracking Action Items





Town of  
**Leland**

Growing our future. Nourishing our roots.

# North Carolina State University Research Proposal

## "Smart Zoning for Coastal Flood Resilience and Adaptation"

Town Council

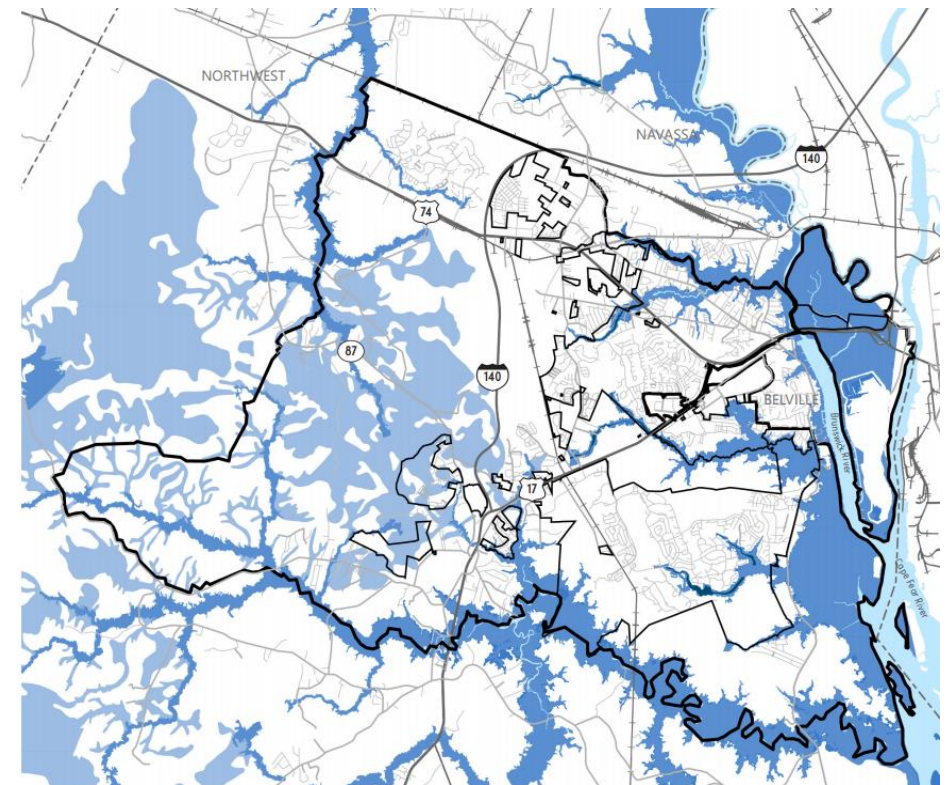
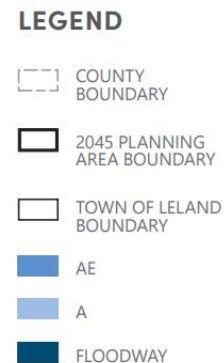
August 15, 2022

Barnes Sutton

Community Development Planner

## Background

- Since 2016, flooding from extreme weather events has caused over \$40 billion in damages across eastern North Carolina
- Coastal municipalities are seeking strategies to reduce current and future flood risk
- Land use policies and zoning regulations to protect residents and reduce long-term vulnerability to flooding
- Proactive and intentional zoning



SOURCE: Design Workshop, FEMA



## Background

- Center for Geospatial Analytics at North Carolina State University
- Research Associate, Dr. Georgina Sanchez and Ph.D. Student, Margaret Lawrimore
- Seeking a partnership with the Town to conduct their research titled, "Smart Zoning for Coastal Flood Resilience and Adaptation"
- Their proposal is to be considered for the North Carolina Sea Grant 2022 Minigrant program
  - Test new ideas, augment ongoing research efforts, stimulate innovation and respond to short-range, critical needs

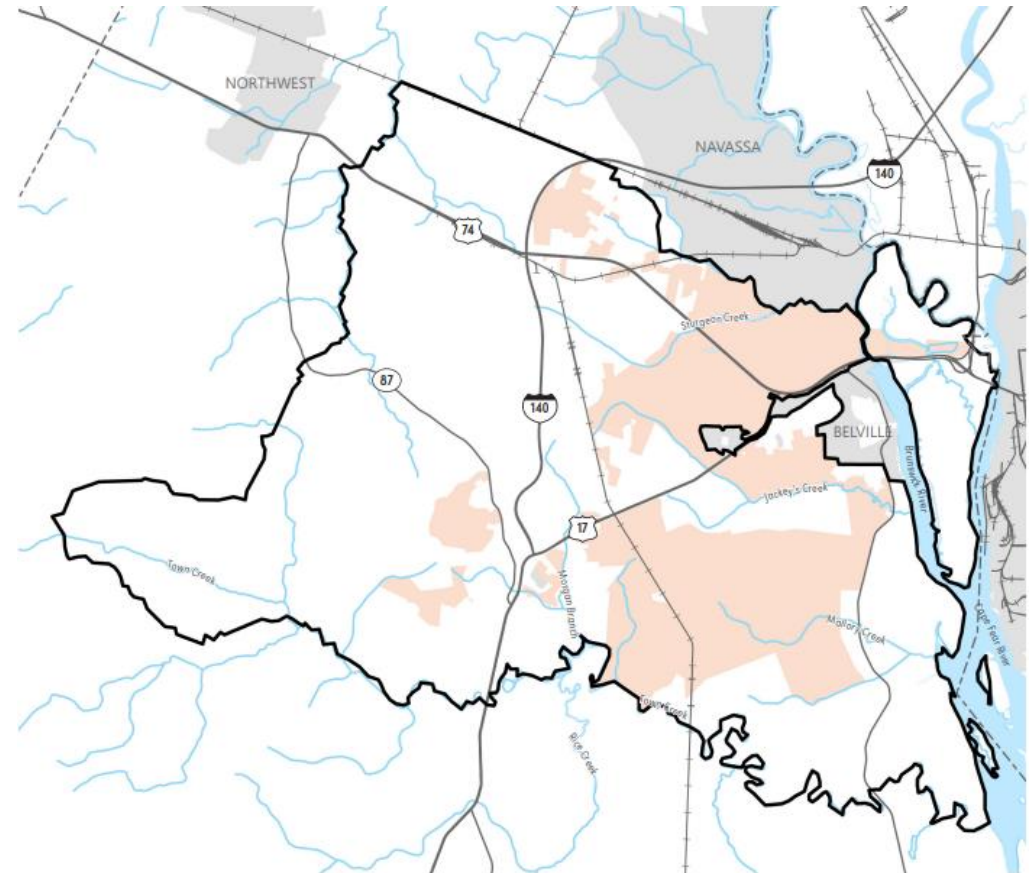
**NC STATE**  
**UNIVERSITY**

Center for  
**Geospatial Analytics**

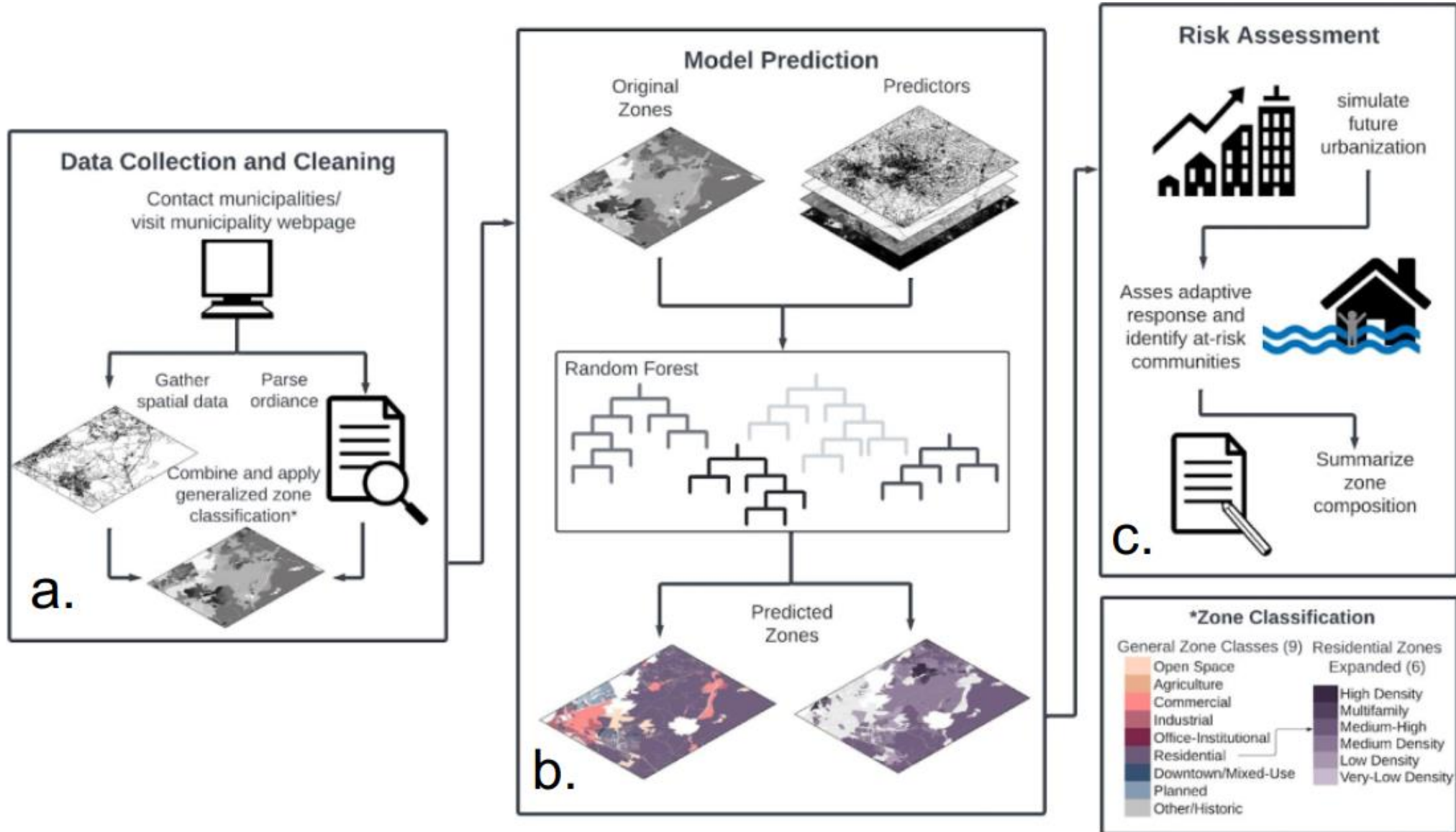


## Purpose of the study

- Identify locations across the 2045 Planning Area likely to experience urban development
- Potential adaptive response to increasing flood risk
- The modeling framework will be instrumental in helping to identify vulnerable communities with little to no ability to adapt to the increasing risk of flooding associated with sea level rise and climate change







## Utility of the Proposal

---

- Serve as a benchmark to track urbanization within the Planning Area
- Assist with determining the location of future public and emergency facilities
- Provide additional data in prioritizing transportation projects
- Identify areas where adaptive zoning could be implemented



## Leland 2045

planning for generations

### HIGHLY VALUED AND PROTECTED NATURAL AND CULTURAL RESOURCES

#### VISION STATEMENT



Leland's natural resources are fundamental to our lifestyle, economy, well-being, and resilience. Protecting and maintaining its health and ecological function are a primary objective within planning for growth.

#### PRINCIPLES

- Our development is done in balance with preserving our natural systems.

#### STRATEGIES

#### INTEGRATE FUTURE LAND USE PLANNING, ZONING, AND SUBDIVISION REGULATIONS WITH ENVIRONMENTAL SYSTEMS MAPPING

- Zone land areas and base their development standards with their natural environmental condition.



Town of  
**Leland**

Growing our future. Nourishing our roots.