



Town of  
**Leland**

Growing our future. Nourishing our roots.

Resilient Coastal Communities Program:  
Public Meeting, August 25, 2021



# Introductions

---



**Samantha  
Burdick**

Coastal  
Resilience  
Coordinator



**Adrianna  
Weber**

Town  
Engineer



**Dawn  
York**

Project  
Manager



**Mike  
Robinson**

Hazard  
Mitigation



**Rachel  
Baker**

Environmental  
Scientist



**Amanda  
Zullo**

Community  
Outreach

# Overview of Resilient Coastal Communities Program (RCCP)

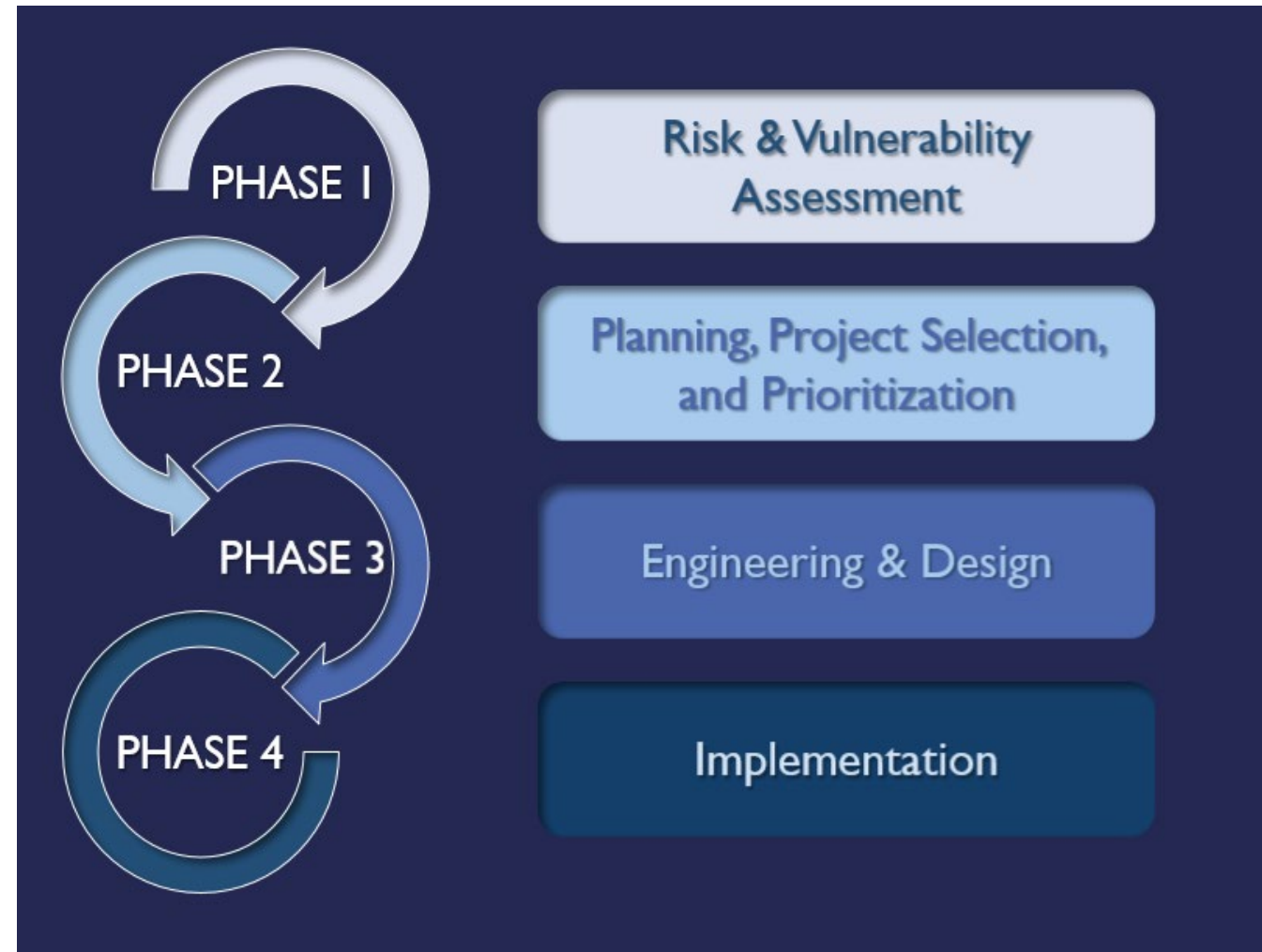
---

NC Division of Coastal Management



## RCCP Program Phases & Objectives

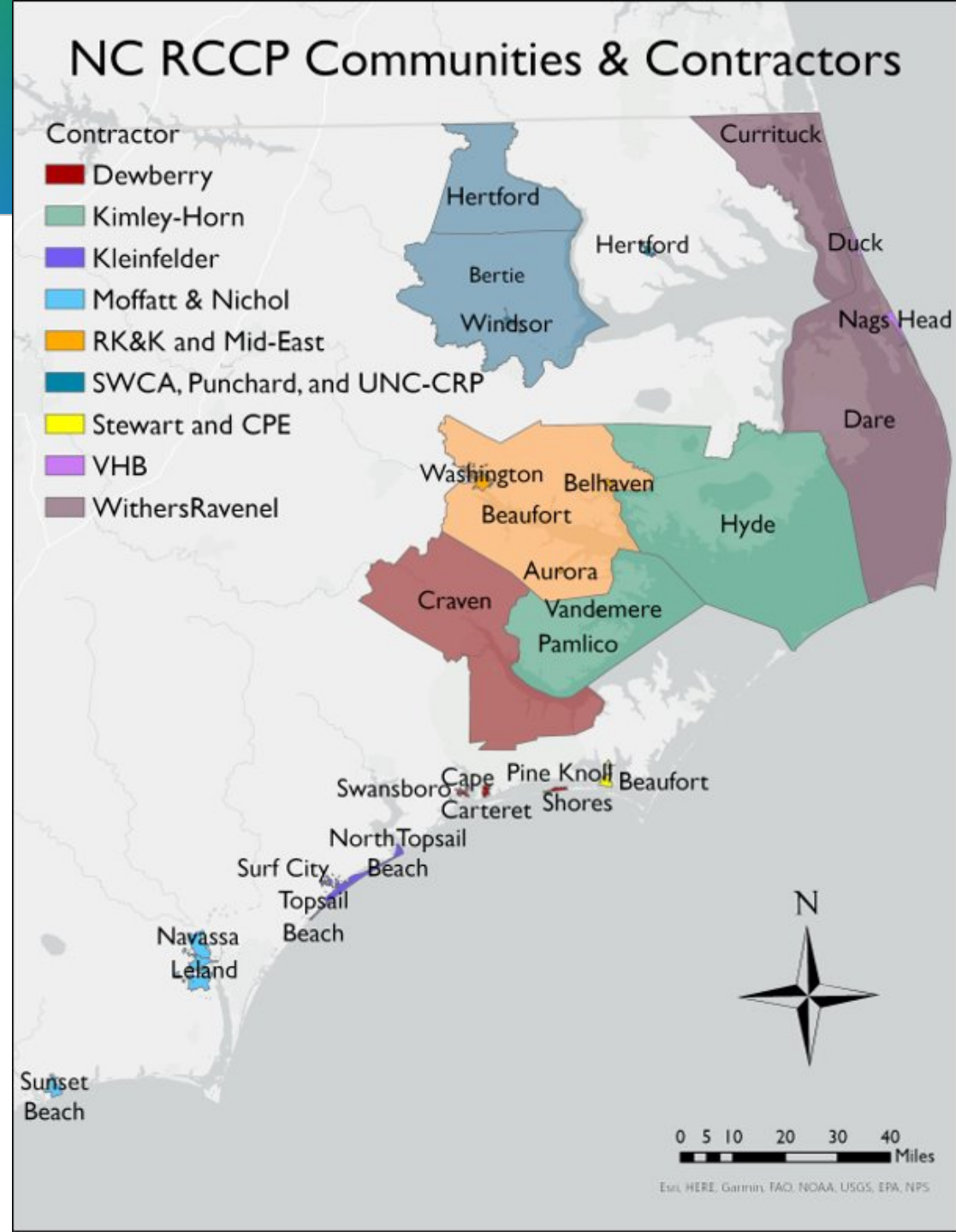
- Minimize barriers to resilience, including economic and capacity-related
- Provide funding and technical assistance for:
  1. Developing local Resilience Strategies, including risk and vulnerability assessments, and portfolios of prioritized resilience projects
  2. Project engineering, design, and implementation
- Promote **locally-driven, inclusive, and forward-thinking** approaches to traditional hazard mitigation planning
- Incentivize innovative solutions, like NNBS (Natural and Nature-Based Solutions)



## 2021 Program Participants

The competitive application period for communities wishing to participate in the program opened in November 2020 and closed on January 15. DCM received 30 applications representing 32 coastal communities (one application was submitted jointly by three communities).

DCM reviewed the community applications with program partners at the NC Office of Recovery and Resiliency (NCORR), NC Sea Grant, and The Nature Conservancy.





# Thank you!

Samantha Burdick  
Coastal Resilience Coordinator  
DCM Point of Contact

[Samantha.Burdick@ncdenr.gov](mailto:Samantha.Burdick@ncdenr.gov)



## Resilient Coastal Communities Program

---

- Location of Town of Leland
  - Susceptible to heavy precipitation events, erosion and riverine flooding
- Rapid growth
- Increase the Town's resiliency to ensure the prosperity of the Town for many years to come





## Resilient Coastal Communities Program

---

- Risk and Vulnerability Assessment of Town's vulnerable areas and critical infrastructure
  - 10+ years since last risk and vulnerability assessment
  - Rapid growth of Town
- Future Projects Portfolio
  - Grant opportunities







# Thank you!

Adrianna Weber

Town Engineer

Town of Leland Point of Contact

[aweber@townofleland.com](mailto:aweber@townofleland.com)

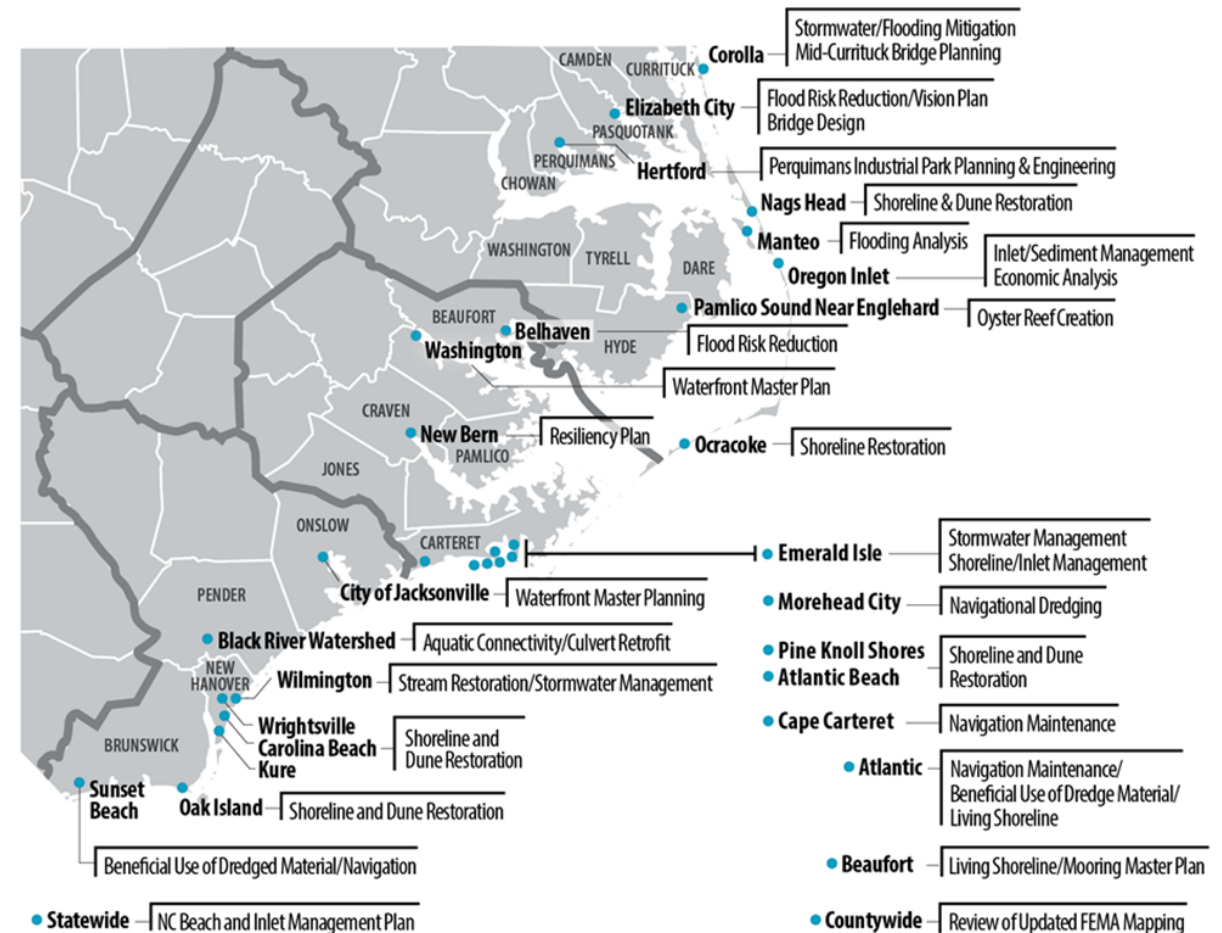
# Scope of Work

Moffatt & Nichol



## Overview

- Resiliency planning and design is about applying standards to withstand or recover quickly.
- M&N has provided resiliency design and related services in some of our most challenging environments.
- Resiliency is about creating responsible and practical solutions for communities.
- A true resiliency plan includes community needs and community desires.





# Program Steps and Requirements

- **Phase 1: Community Engagement and Risk/Vulnerability Assessment**

- ✓ **Step 1: Develop a Community Action Team**

- Step 2: Set Vision and Goals

- ✓ **Step 3: Review Existing Local Plans & Efforts**

- ✓ **Step 4: Develop a Community Engagement Strategy**

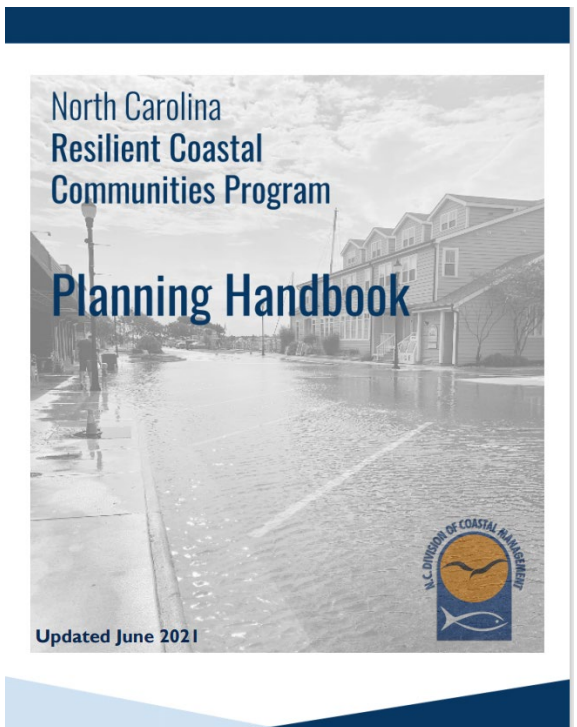
- ✓ **Step 5: Map Critical Assets and Natural Infrastructure**

- Step 6: Conduct a Risk and Vulnerability Assessment

- **Phase 2: Planning, Project Identification, and Prioritization**

- Step 1: Identify a Suite of Potential Solutions

- Step 2: Consolidate and Prioritize Projects





## Proposed Schedule

Phase	Step	Task	Schedule
1	1	Develop a Community Action Team (CAT)	May 2021
	2	Set Vision and Goals	July 2021
	2a	CAT meeting #1	July 7, 2021
	3	Review Existing Local Plans	May – July 2021
	4	Develop Community Engagement Strategy	June 2021
	5	Map Critical Assets/Natural Infrastructure	June – July 2021
	5a	Public Meeting	August 2021
	6	Conduct a Risk and Vulnerability Assessment	July – September 2021
			Community Action Team meeting #2
2	1	Identify a Suite of Potential Solutions	October 2021
	1a	Community Action Team meeting #3	October 2021
	2	Consolidate and Prioritize Projects	November 2021
	3	Finalize Report	January 2022

# Overview

Community Outreach



## RCCP Tools, Techniques & Strategies

- **Hybrid Meetings**
  - Community Action Team
  - Public Meeting
- **Project Data / Resources**
  - Webpage with Planning Resources
  - Project Information Fact Sheet
  - Public Participation Survey
- **Outbound Communication**
  - Social Media
  - Local Newspaper, Press Releases, Printed Material



**LELAND RESILIENT COASTAL COMMUNITIES PROGRAM**  
Project Information Fact Sheet

The Town of Leland is currently participating with the North Carolina Division of Coastal Management (DCM) in the Resilient Coastal Communities Program (RCCP) to enhance resiliency to natural hazards. Building resiliency to natural hazards is vital for communities to help maintain quality of life, healthy growth, durable systems, and conservation of resources for present and future generations.

**Purpose of the Project**

The purpose of this project is to build a more resilient Leland community. Several barriers to developing resilience to coastal risks exist, including economic and capacity constraints that have been exacerbated in recent times. This project aims to enhance resiliency by assisting communities with risk and vulnerability assessments; developing, prioritizing, and readying coastal resilience projects for implementation; and providing technical resources to link communities to funding streams for project implementation.

**Involvement in the Project**

**Public Survey:** Initial questionnaire serving to gauge priorities and preferences of general public as a baseline for project plans.

**Public Meeting:** Consisting of a hybrid format, with the options for the public to engage either virtually or in-person, this meeting will provide an overview of the project and a discussion of community vision and goals. Input, comments, and additional ideas are encouraged from members of the community.

In partnership with:  

**What does this mean?**

**Resiliency** refers to not only the ability of a community to anticipate, prepare for, respond to, and recover from threats, but to thrive amidst changing conditions or challenges.

**Risks** refer to multi-hazard threats to communities such as flooding, storm surge, or sea level rise that may occur amidst storms and a changing climate.

**Vulnerabilities** refer to the degree of exposure to a community's associated risks, and the means to cope with stressors or disasters that arise from them.

**Project Schedule**

- **Public Survey:** Mid-July to Mid-August 2021
- **Public Meeting:** August 2021
- **Final Presentation to Town:** December 2021

**Questions / More Information**

Please visit our website or contact:  
Adrianna Weber  
aweber@townofleland.com  
910.408.3052

In the meantime, please check the [Town of Leland's website](#) over the course of the project to stay updated on the latest news.





## Ways to Get Involved

- **Stay Connected**

- Visit project website, subscribe, get social, and email us
- <https://www.townofleland.com/environmental-resiliency>

- **Take the Public Participation Survey**

- Survey will be open until mid-September
- <https://www.surveymonkey.com/r/LelandRCCPSurvey>
- Survey takes approximately 10 minutes
- Very helpful way for you to share feedback and provide input
- +120 people have taken the survey already!

- **Provide Comments on Maps**

- A comment form will be available on the project webpage





# Overview

## Hazard Mitigation Planning



## Hazard Mitigation Planning

- Hazard mitigation planning has long been a foundational element in North Carolina's resilience to natural hazards
- This program will build upon, but go beyond, "traditional" hazard mitigation planning practices
- This means we will utilize existing hazard mitigation resources and principles, but enhance and expand our resiliency efforts for the Town of Leland
- Potential resilience projects will be prioritized during Phase 2



# Preliminary Results

Risk and Vulnerability Assessment



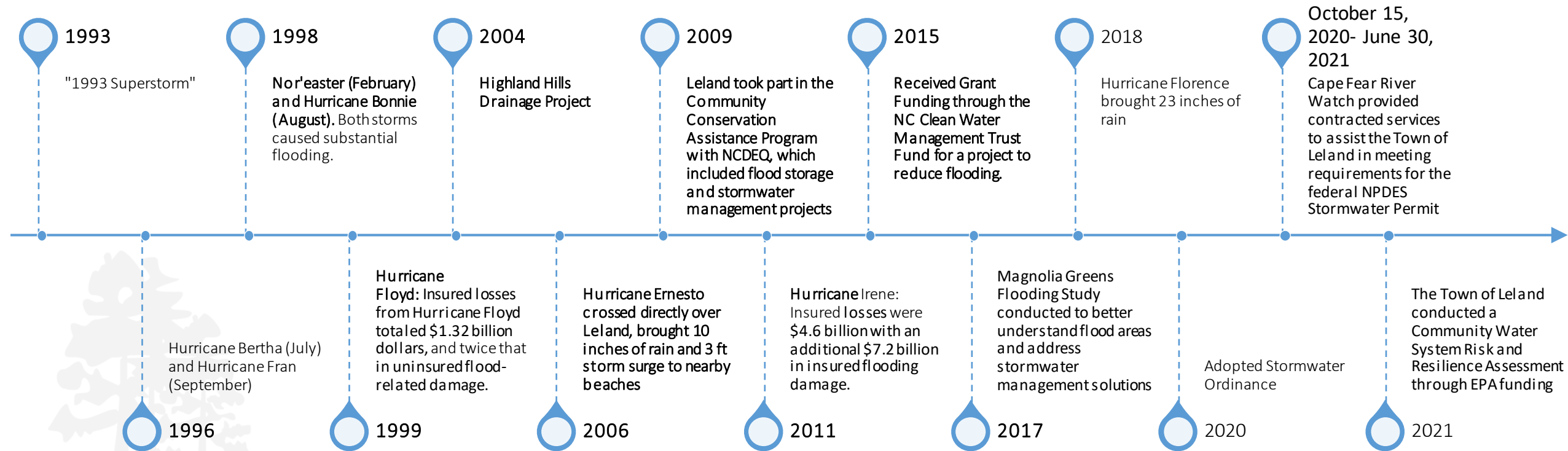
## What are your risks?

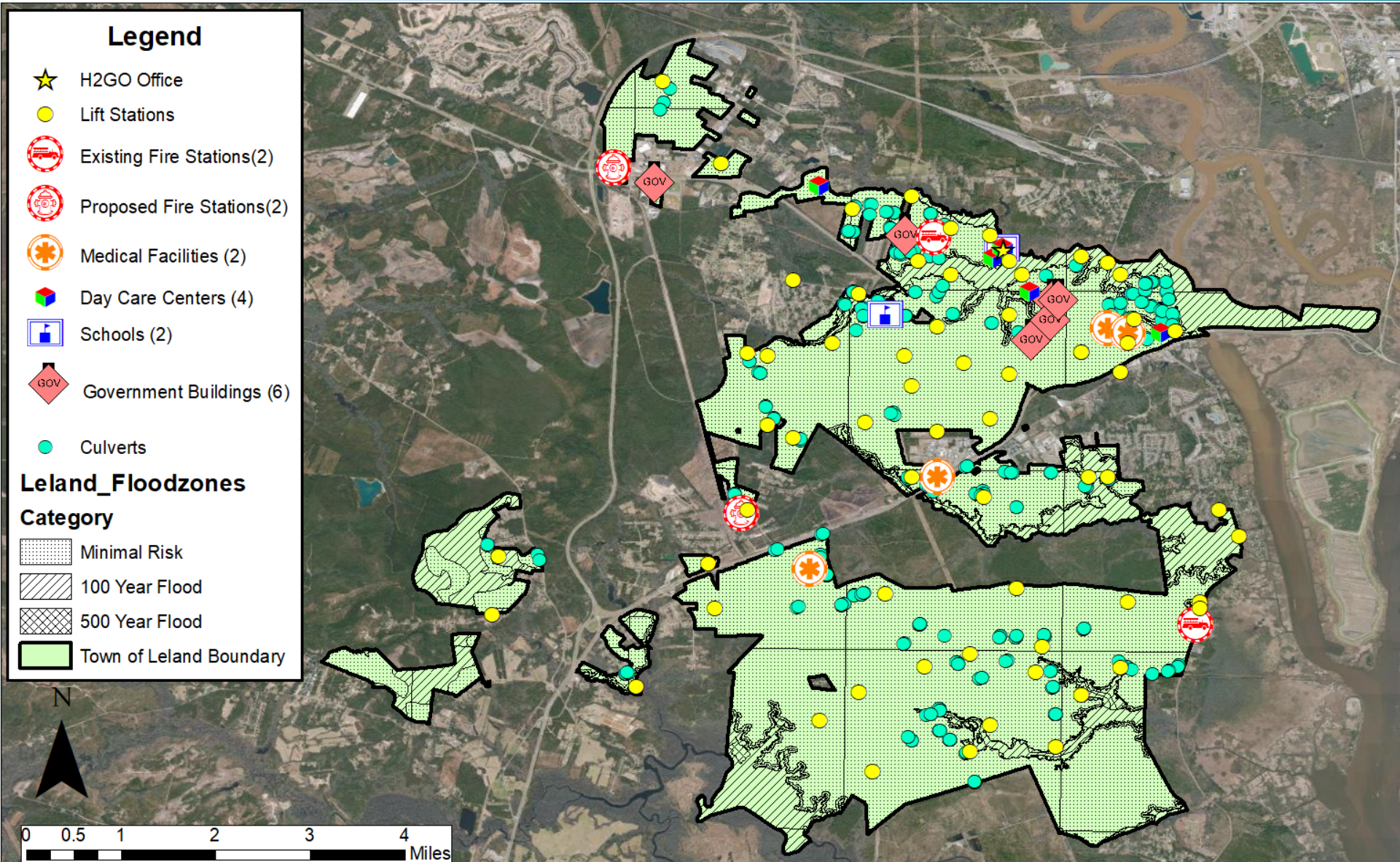
---

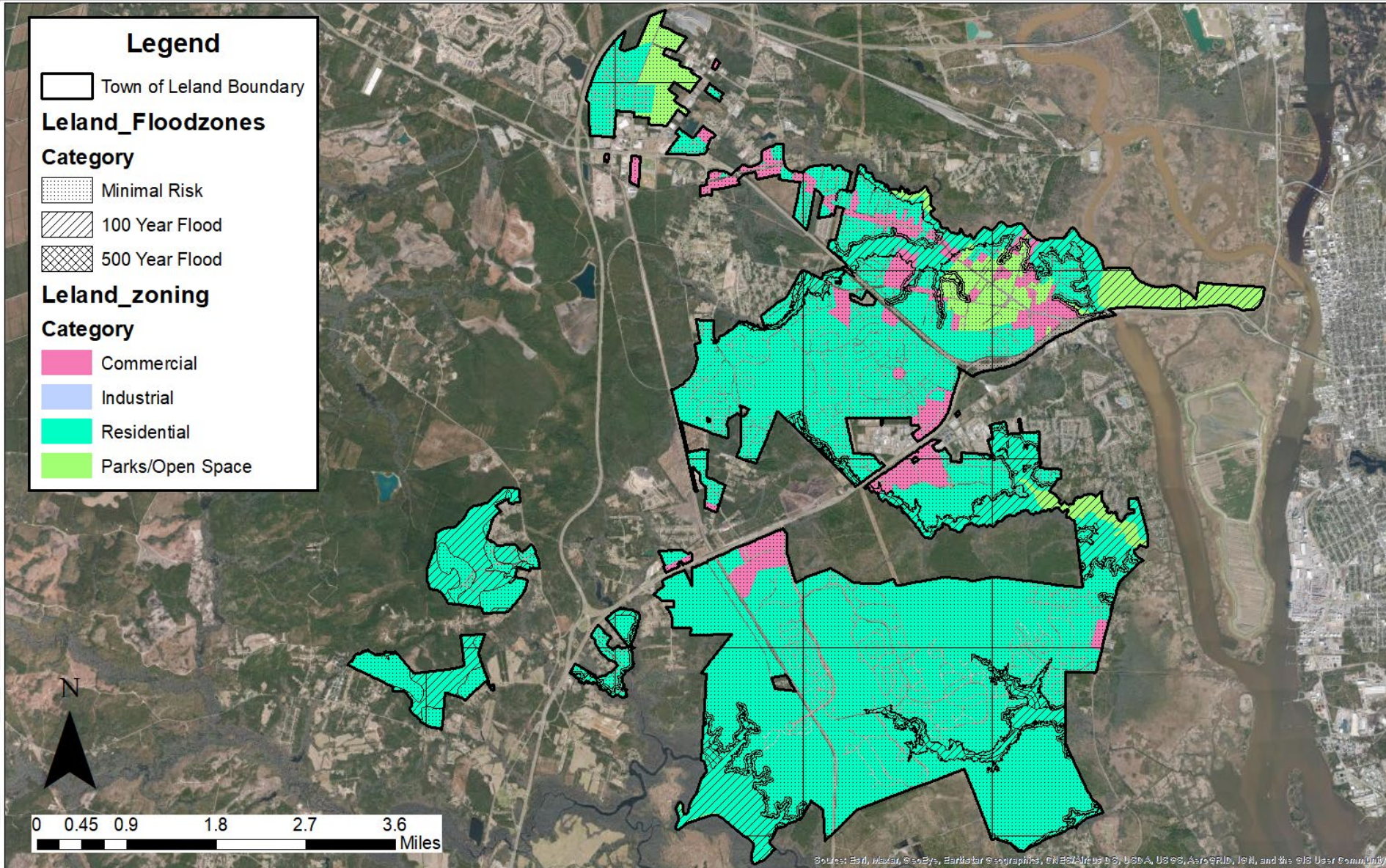
- **Addresses exposure, vulnerability and risk**
- **Primary focus is on natural hazards, specifically the flood hazard, consisting of:**
  - Coastal and riverine flooding (floodplain inundation)
  - Storm surge
  - Sea level rise
  - Increased precipitation
  - Stormwater
- **Goal is to show potential impacts on community assets and the built environment**
- **Current conditions as well as future conditions**

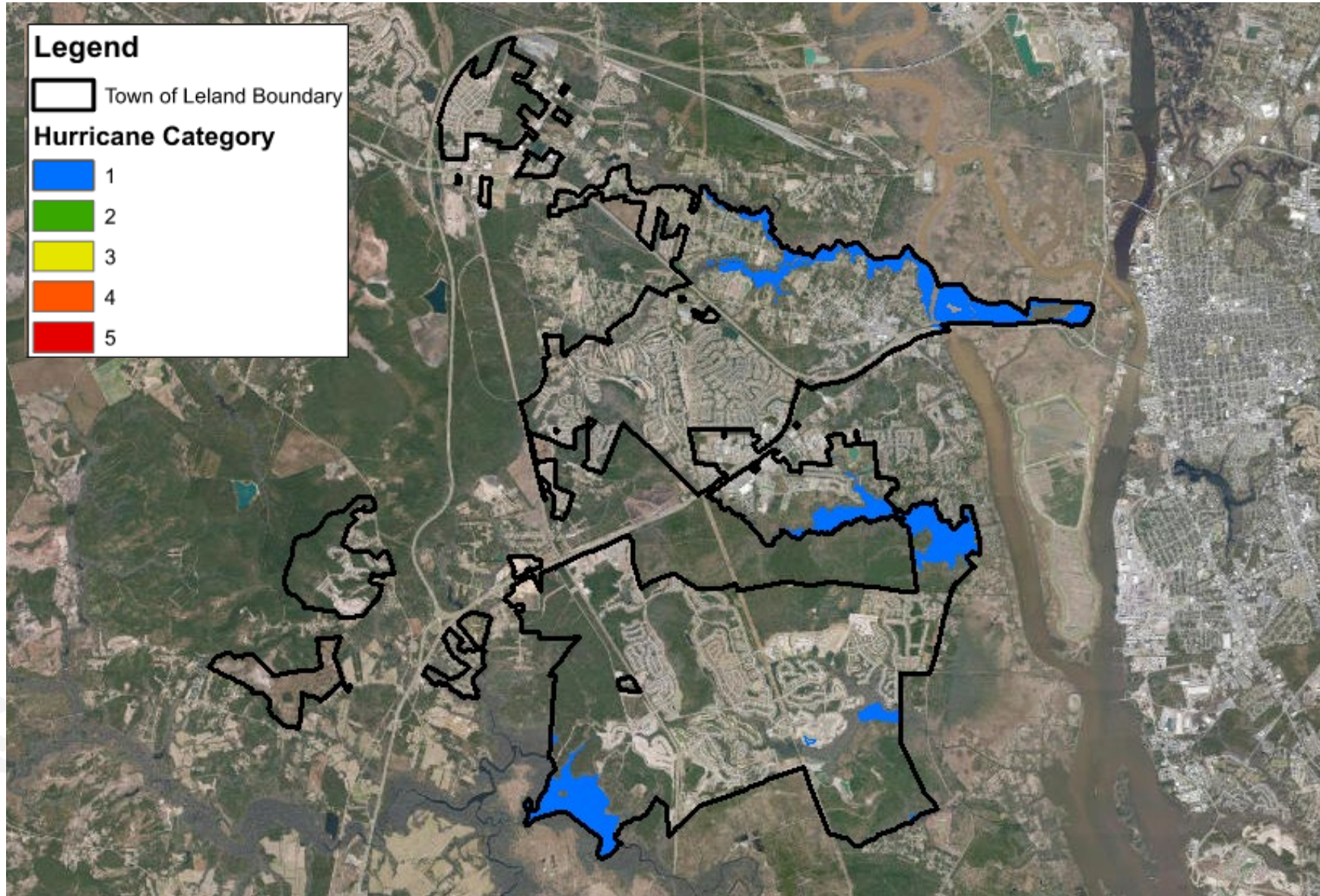


## Resiliency and The Town of Leland

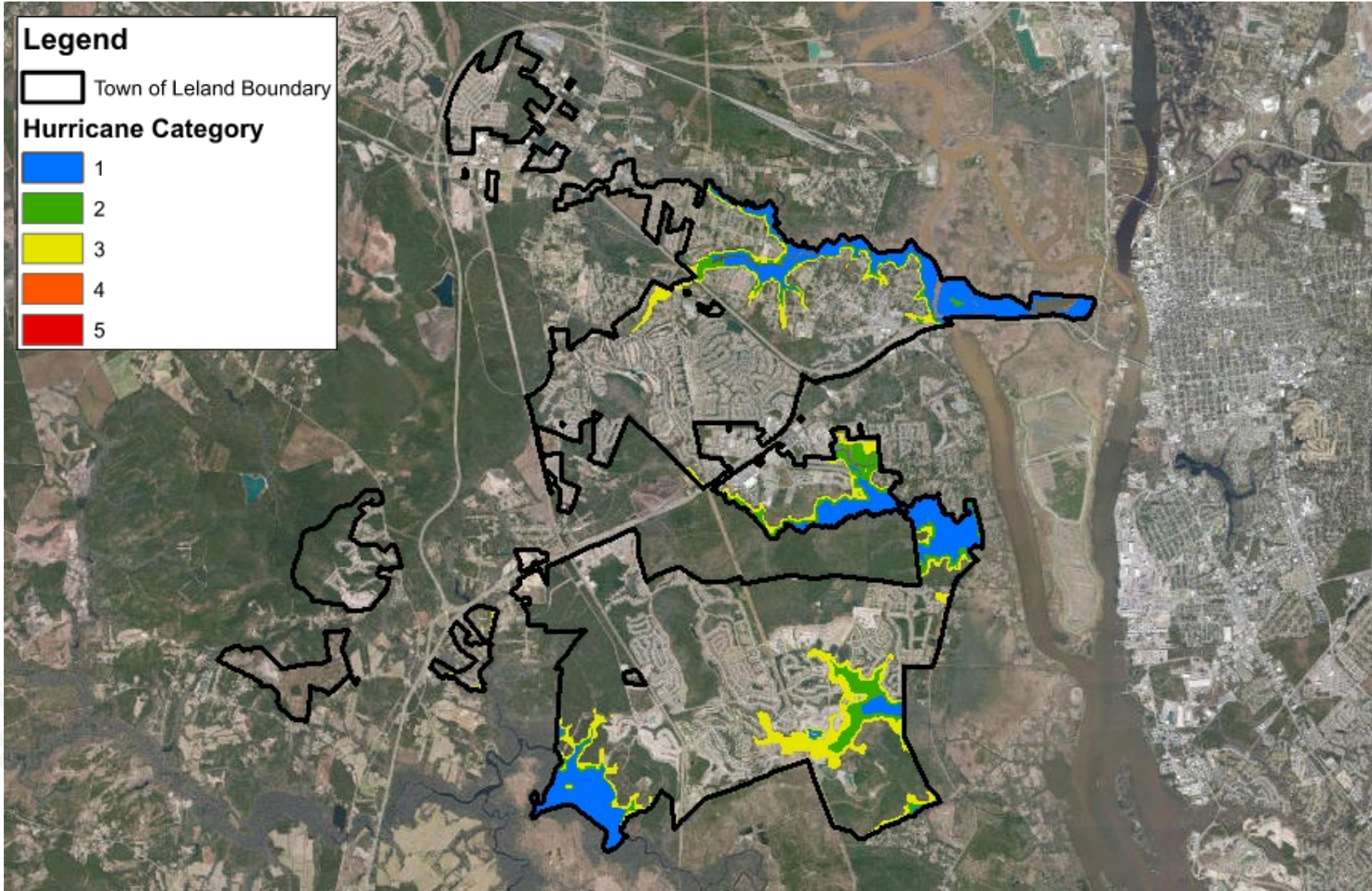


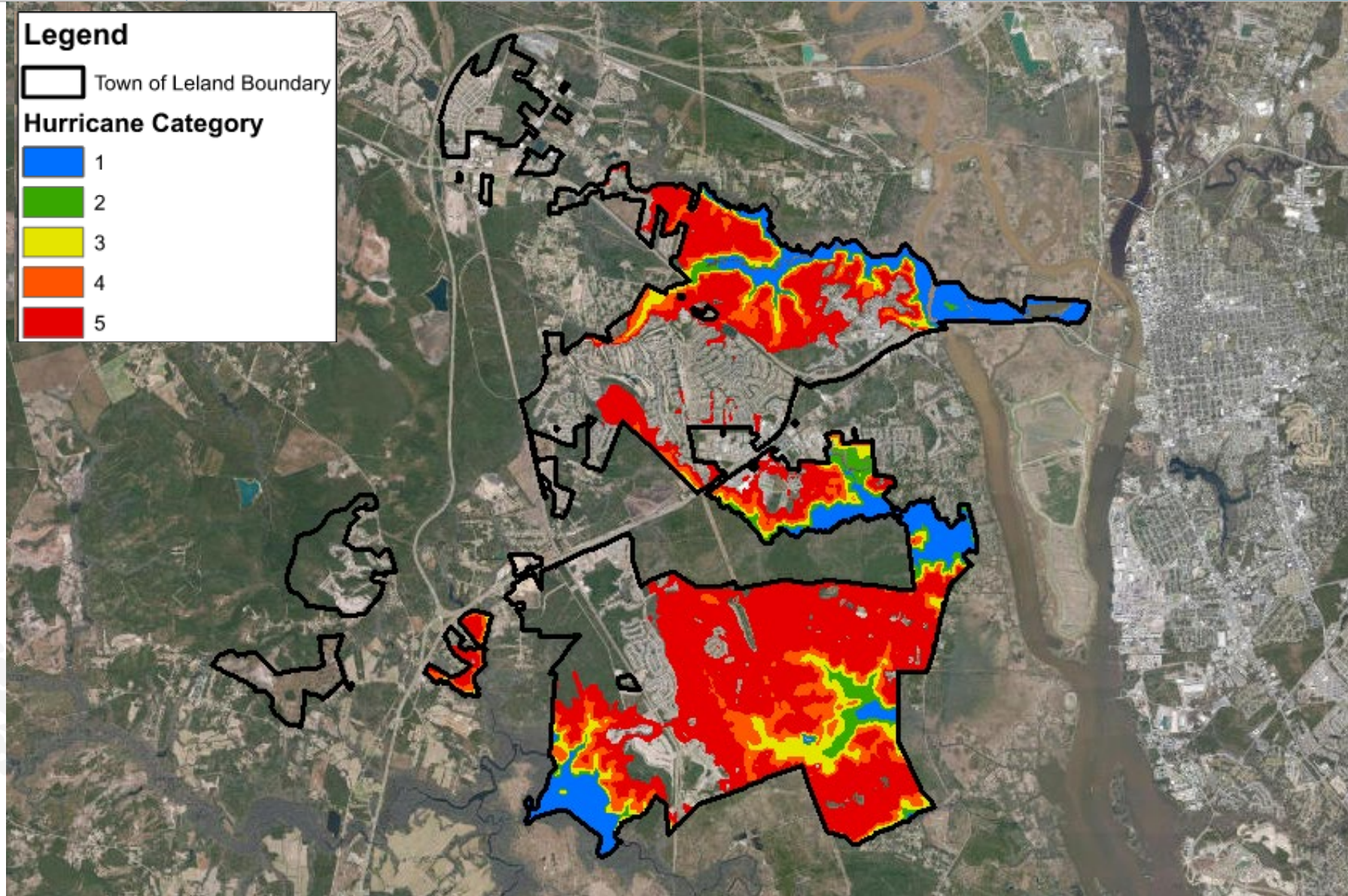












# Next Steps



## What's Next?

---

- Using public input and staff knowledge, develop a community-specific vision and goals to ensure community values and priorities are considered during the entire process.
- Review additional data and resources necessary to complete risk and vulnerability assessment.
- Identify potential nature-based solutions to improve resiliency.



## We need your help!

---

- Are there any data sources we should be aware of?
- What are your thoughts on the engagement strategy as presented?  
How do we best reach out to vulnerable communities?
- What are the greatest risks/vulnerabilities/priorities you see for the Town of Leland?

Dawn York – [dyork@moffattnichol.com](mailto:dyork@moffattnichol.com); 910-218-7087





Town of  
**Leland**

Growing our future. Nourishing our roots.

Resilient Coastal Communities Program:  
Public Meeting, August 25, 2021



