

LELAND INNOVATION PARK

+/- 1- 200 ACRE INDUSTRIAL LOTS FOR SALE

LELAND, BRUNSWICK COUNTY, NC

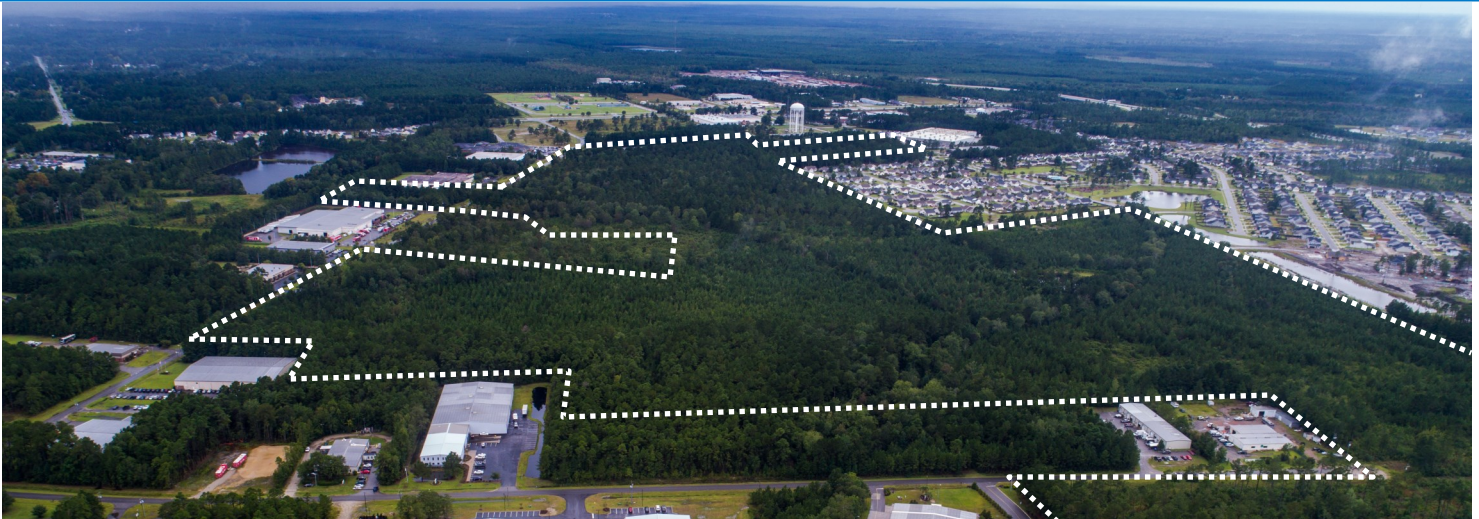



Presented By:
Cape Fear Commercial
1051 Military Cutoff Rd | Suite 200
Wilmington, NC 28405
(p) 910.344.1000 (f) 910.344.1020



The information contained herein is from sources we deem accurate and reliable, however, it is submitted without representation or warranty and Cape Fear Commercial assumes no liability for errors and omissions of any kind.

PROPERTY SUMMARY



Address:	Leland Innovation Park Mercantile Drive NE Leland, Brunswick County, NC 28451	
Description:	<ul style="list-style-type: none">• The property offering consists of numerous industrial tracts ranging from +/- 1- 200 acres available in Leland Innovation Park.• Located approximately 9 miles from downtown Wilmington.• I-140 ("Wilmington Bypass") intersects US Highway 74/76 in the immediate vicinity of the property, creating convenient access to all parts of New Hanover and Brunswick counties.	
Acreage:	Tracts available from +/- 1- 200 Acres	
Zoning:	IG - Industrial (General) - Brunswick County	
Utilities:	Water and Sewer available through Brunswick County. Piedmont Natural Gas is also available along with fiber internet capabilities.	
Price:	\$50,000-\$75,000 Per Acre Please Inquire on specific site pricing. See following page for conceptual site plan.	

For more information, please contact:

Will Leonard

910.344.1015 (main)

910.233.5351 (mobile)

will@capefearcommercial.com



CONCEPTUAL SITE PLAN



For more information, please contact:

Will Leonard

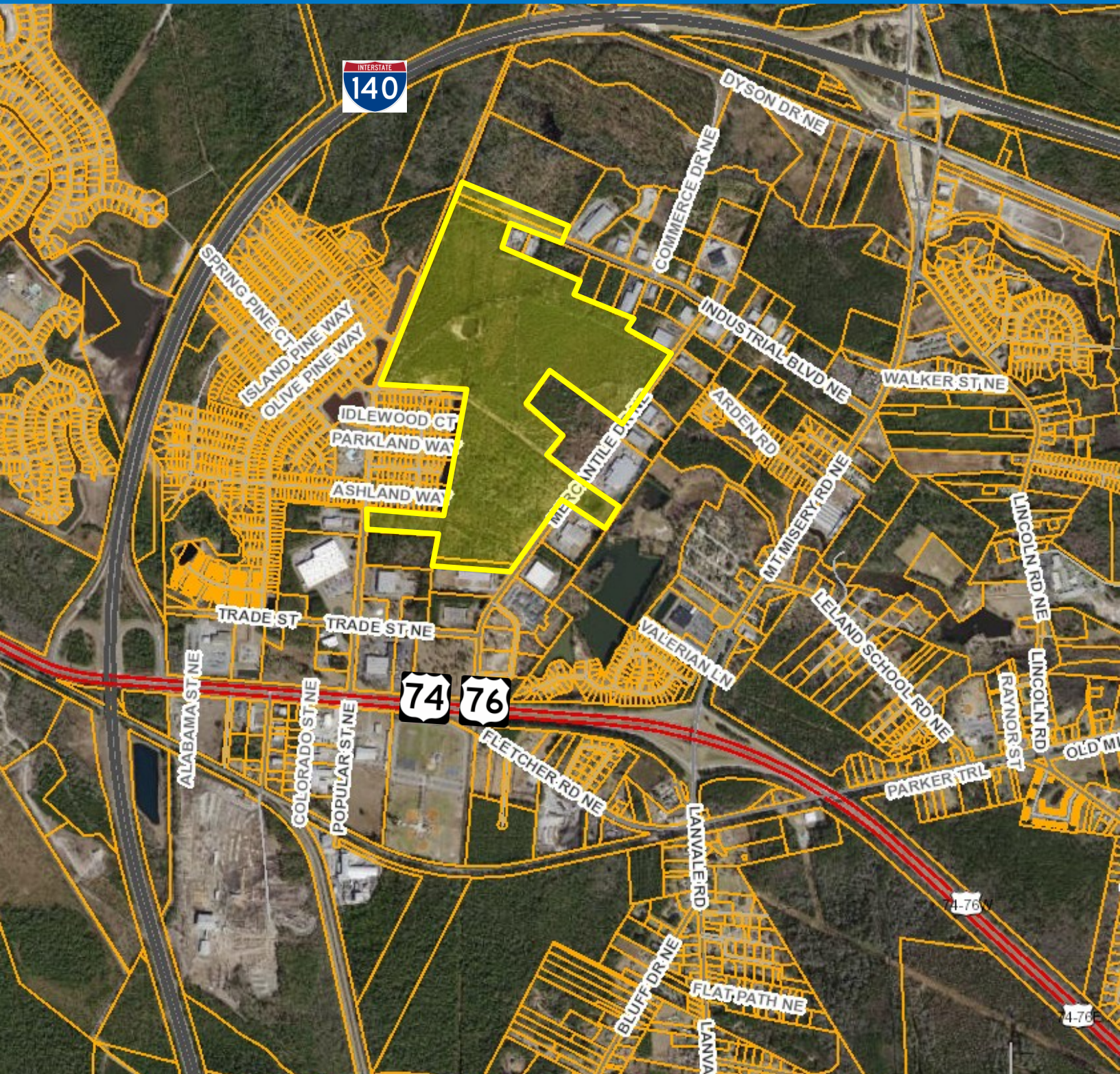
910.344.1015 (main)

910.233.5351 (mobile)

will@capefearcommercial.com



The information contained herein is from sources we deem accurate and reliable, however, it is submitted without representation or warranty and Cape Fear Commercial assumes no liability for errors and omissions of any kind.



For more information, please contact:

Will Leonard

910.344.1015 (main)

910.233.5351 (mobile)

will@capefearcommercial.com



LOCATION MAP



For more information, please contact:

Will Leonard

910.344.1015 (main)

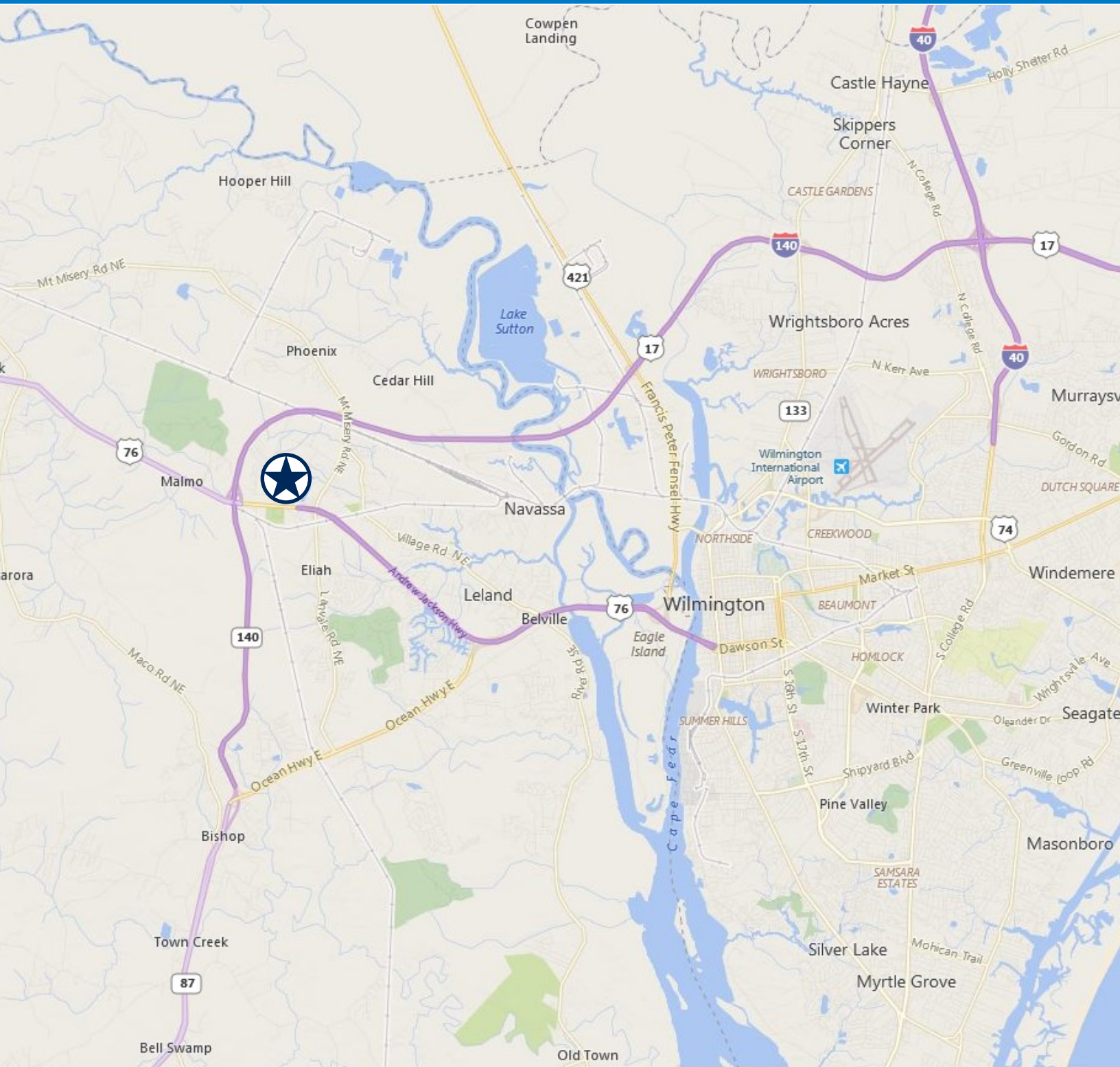
910.233.5351 (mobile)

will@capefearcommercial.com



The information contained herein is from sources we deem accurate and reliable, however, it is submitted without representation or warranty and Cape Fear Commercial assumes no liability for errors and omissions of any kind.

LOCATION MAP



For more information, please contact:

Will Leonard

910.344.1015 (main)

910.233.5351 (mobile)

will@capefearcommercial.com



The information contained herein is from sources we deem accurate and reliable, however, it is submitted without representation or warranty and Cape Fear Commercial assumes no liability for errors and omissions of any kind.