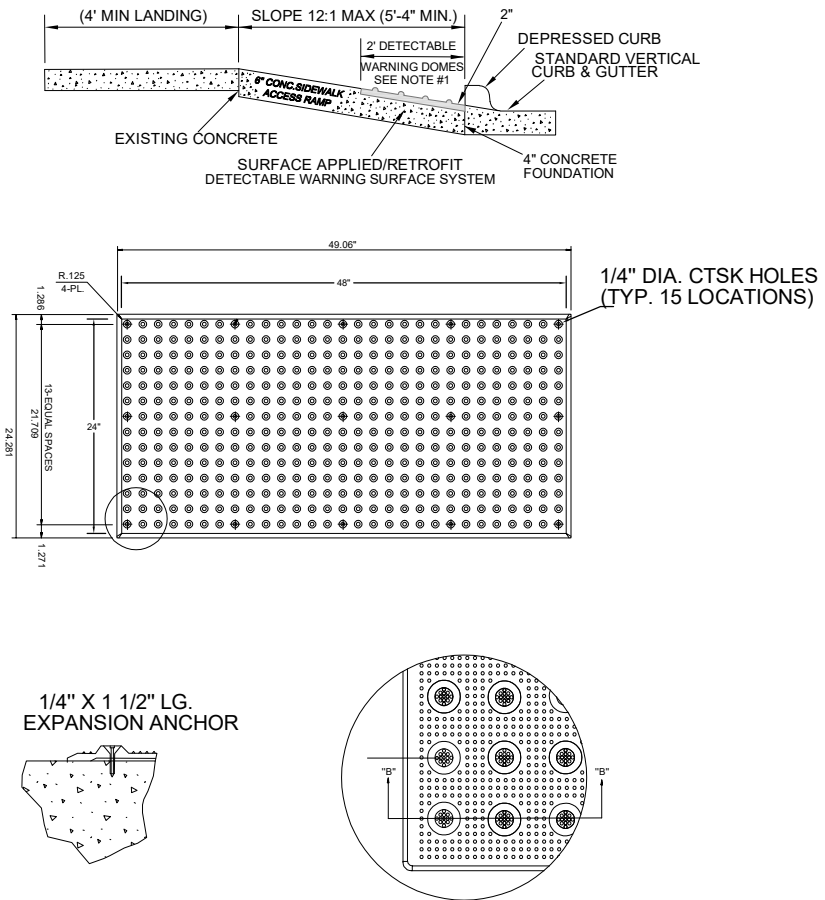
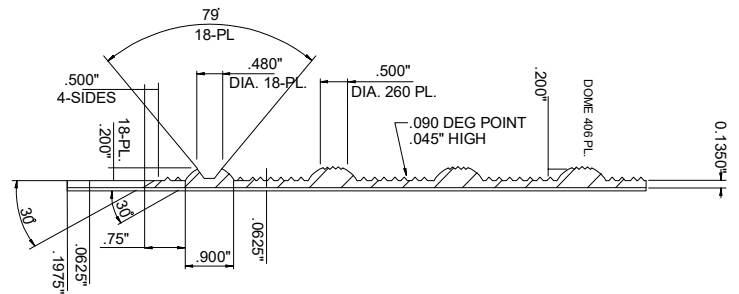


**RETROFITTED EXISTING CURB RAMP WITH DETECTABLE WARNING DEVICE**



**NOTES:**

1. THIS APPLICATION ONLY TO BE USED WHEN RETROFITTING OTHERWISE ADA COMPLIANT CURB RAMPS.
2. DETECTABLE WARNING DEVICES SHALL COVER 2'0" LENGTH AND FULL WIDTH OF THE RAMP FLOOR AS SHOWN ON DETAIL.
3. ALL CURB RAMPS TO BE ADA COMPLIANT WHEN COMPLETED.



SECTION: STREETS
DATE: 2021
DRAWN BY: JWP
CHECKED BY: TOWN PSD
SCALE: NOT TO SCALE

**DETECTABLE WARNING DEVICE FOR RETROFIT CURB RAMP LOCATION**

**PUBLIC SERVICES DEPARTMENT**

**DETAIL NO. ST- 10**